



Cool coating with premium heat-reflective technology from Dura Coat.

KYNAR 500® or HYLAR 5000® Pre-Finished Steel & Aluminum Flat Sheets & Coil.

*Premium Color



Deep Black



Matte Black



Charcoal Gray



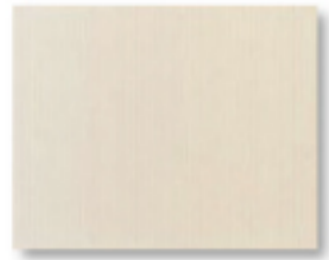
Musket Gray



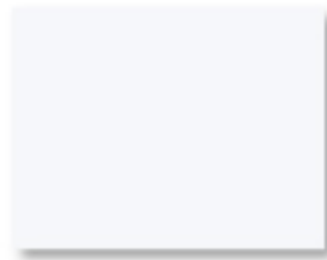
Slate Gray



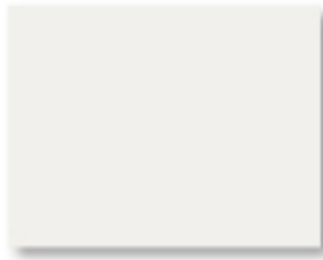
Ash Gray



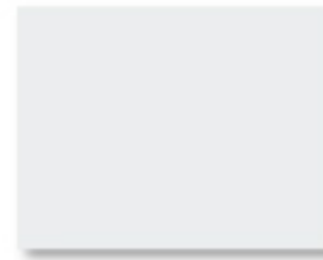
Almond



Bright White



Bone White



Stone White



Cityscape



Extra Dark Bronze



Sandstone



Sierra Tan



Medium Bronze



Mansard Brown



Burnished Slate



Dark Bronze



Hartford Green



Classic Green



Hemlock Green



Teal



Slate Blue



Royal Blue



Regal Red



Colonial Red



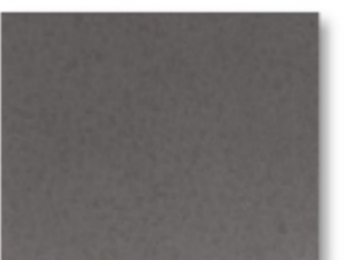
Burgundy



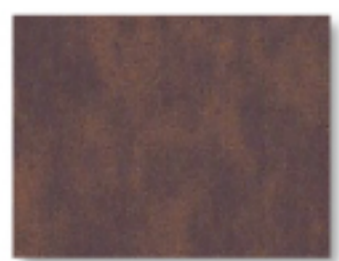
Terra Cotta



Galvalume Plus



* Vintage



* Western Rust



*Copper Penny



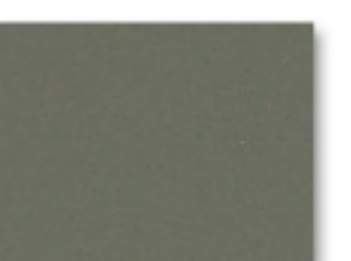
*Weathered Zinc



* Silver



* Champagne



* Aged Copper

Vertex Metal Roofing

TOLL-FREE: (877)-638-2537

www.vertexroofing.com

Stock Availability Matrix

G90 Galvanized/AZ50 Galvalume

| Color Name | ULTRA-COOL RATINGS | | | 22 ga. | 24 ga. | | 26 ga. | | 26 ga. 3D | | 28 ga. |
|--------------------------|--------------------|-------|-----|--------|--------|-----|--------|-----|-----------|-----|--------|
| | Reflect | Emiss | SRI | 48" | 40" | 48" | 40" | 48" | 40" | 48" | 42" |
| Acrylic Coated Galvalume | N/A | N/A | N/A | • | • | • | • | • | | | • |
| Aged Copper | 26.8% | 0.85 | 26 | | • | • | | | | | |
| Almond | 61.4% | 0.83 | 72 | • | • | • | | • | | | • |
| Antique Ivory | N/A | N/A | N/A | | | | | • | | | • |
| Ash Gray | 49.8% | 0.85 | 56 | | | • | | • | | | |
| Bone White | 67.6% | 0.84 | 81 | • | • | • | | • | | | • |
| Bright White | 67.8% | 0.84 | 81 | | | • | | | | | |
| Burgundy | 27.1% | 0.85 | 26 | | • | • | • | • | • | • | |
| Burnished Slate | 25.1% | 0.83 | 33 | | • | • | • | • | • | • | |
| Champagne | 47.2% | 0.80 | 51 | | | • | | | | | |
| Charcoal Gray | 25.3% | 0.84 | 23 | • | • | • | • | • | • | • | • |
| Cityscape | 45.2% | 0.87 | 51 | | | • | | | | | |
| Classic Green | 30.5% | 0.85 | 30 | | • | • | • | • | • | • | • |
| Colonial Red | 33.2% | 0.86 | 35 | | • | • | • | • | • | • | • |
| Copper Penny | 43.9% | 0.84 | 48 | | • | • | | • | | | |
| Dark Bronze | 27.7% | 0.85 | 27 | • | • | • | • | • | • | • | • |
| Deep Black | 26.7% | 0.84 | 25 | • | • | • | • | • | | | • |
| Extra Dark Bronze | N/A | N/A | N/A | | • | • | | | | | |
| Hartford Green | 27.1% | 0.83 | 25 | • | • | • | • | • | • | • | • |
| Hemlock Green | 31.1% | 0.85 | 31 | | • | • | | | | | |
| Mansard Brown | 26.0% | 0.85 | 25 | • | • | • | • | • | • | • | • |
| Matte Black | 26.8% | 0.84 | 25 | • | • | • | • | • | • | • | • |
| Medium Bronze | 30.9% | 0.86 | 31 | • | • | • | • | • | • | • | • |
| Musket Gray | 34.8% | 0.83 | 35 | | • | • | • | • | • | • | |
| Pebble Clay | 43.4% | 0.84 | 47 | | | | | • | | | • |
| Regal Red | 38.5% | 0.85 | 41 | | | • | | • | | | |
| Royal Blue | 26.8% | 0.85 | 26 | | • | • | | • | | | |
| Sandstone | 59.7% | 0.82 | 69 | • | | • | | | | | |
| Sierra Tan | 45.8% | 0.83 | 50 | • | • | • | | • | • | • | • |
| Silver | 55.6% | 0.81 | 63 | | • | • | | | | | |
| Slate Blue | 32.8% | 0.84 | 33 | | • | • | | • | | | • |
| Slate Gray | 37.5% | 0.82 | 38 | • | • | • | • | • | • | • | • |
| Stone White | 65.6% | 0.82 | 77 | | | • | | | | | |
| Teal | 27.9% | 0.85 | 27 | | • | • | | | | | |
| Terra Cotta | 41.9% | 0.83 | 45 | | | • | | • | • | • | |
| Vintage | 30.0% | 0.70 | 22 | | • | • | | | | | |
| Weathered Zinc | 38.3% | 0.85 | 41 | | • | • | | | | | |
| Western Rust | 24.0% | 0.87 | 23 | | • | • | | | | | |

Oil canning is an inherent part of light gauge cold formed metal products and is not cause for coil, sheet or panel rejection. Protective film must be removed immediately after installation. Colors and sizes can change without notice. Additional sizes may be available, please contact your sales representative. Please contact our office for maintenance and cleaning procedures.

Product Description

Ultra-Clad pre-finished metal features Dura Coat Durapon 70% full strength PVDF paint finishes formulated with Cool technology. This high performance product provides the ultimate in resistance against fading and weathering. In addition to our standard colors, custom colors are also available up request.

Color Samples

Colors shown represent the actual colors as accurate as modern printing technology will permit. Colors represented on electronic charts may not match actual material. All colors should be verified using actual metal samples. Mismatch of electronic color representation and actual material shall not be accepted as a cause for rejection. Free metal samples are available upon request.



KYNAR 500 is a registered trademark of ELF Atochem North America, Inc.
 HYLAR 5000 is a registered trademark of Ausimont USA, Inc.
 GALVALUME is registered trademark of BIEC.